



10 Gables Close, Datchet, SL3 9BB
Offers in excess of £600,000

 **HORLER**

10 Gables Close, Datchet, SL3 9BB

A delightful three bedroom semi-detached family home set on a superb plot within a pleasant, family-friendly cul-de-sac, this home offers a sense of community and tranquillity. The outdoor space is ideal for children to play and for hosting gatherings with friends and family. Parking is a significant advantage, with space available for up to five vehicles, making it easy for residents and visitors alike.



Property Summary

The property boasts three well-proportioned bedrooms, each offering a comfortable retreat, while the generous living room provides an inviting setting for family gatherings and entertaining. With scope for further extension, this home allows new owners the chance to create a space perfectly suited to their lifestyle.

A particular highlight is the substantial corner garden, offering plenty of room for children to play, outdoor dining, or cultivating a vibrant garden. It's a versatile space that can be enjoyed throughout the year.

Perfectly positioned, the property is within easy walking distance of local shops, cafes, and amenities, while excellent transport connections ensure straightforward travel to nearby towns and into London. Families will also value the close proximity to well-regarded schools catering for all age groups.

Offered to the market with no onward chain, this home combines charm, convenience, and future potential — making it a truly appealing choice in one of Datchet's most desirable locations.

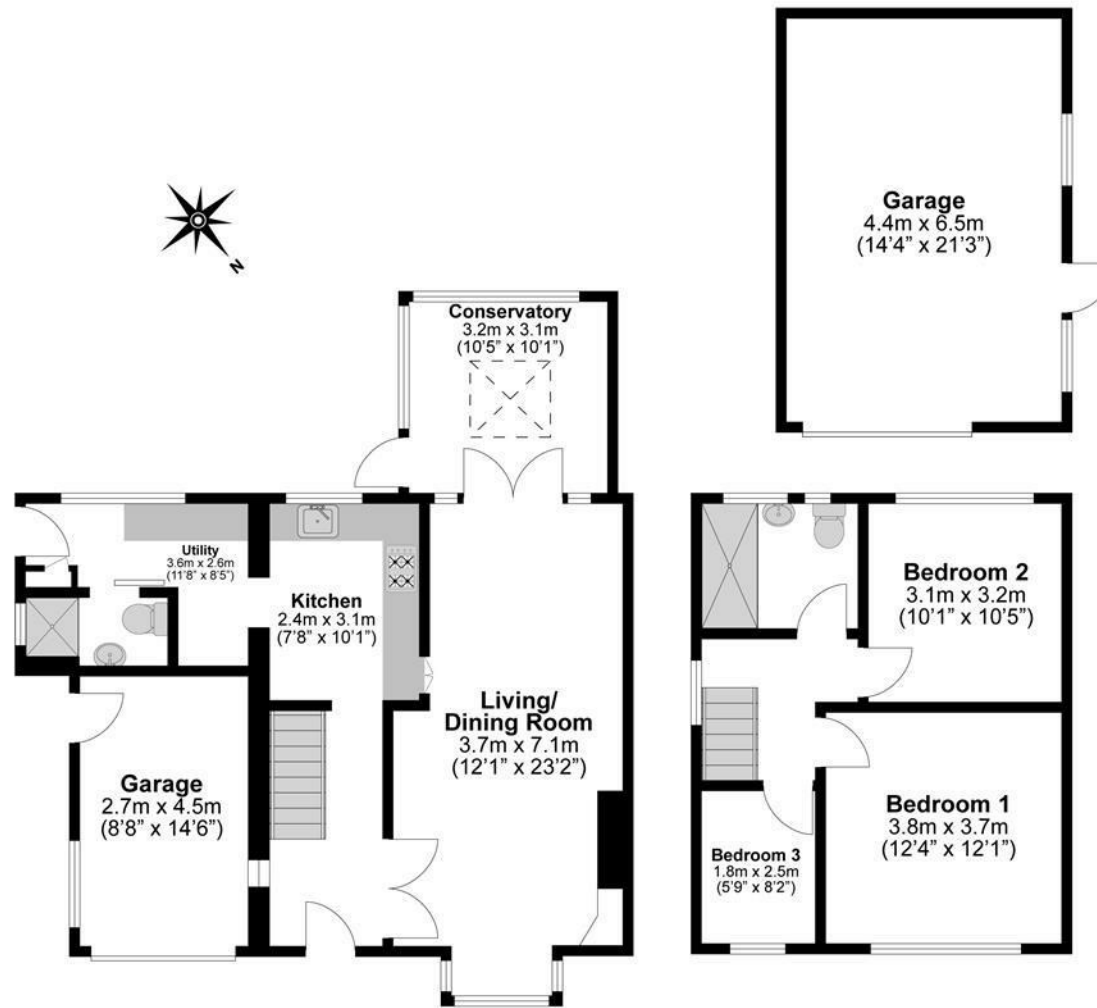
General Information

Tenure: Freehold

Council Tax Banding: E







**Illustrations are for identification purposes only,
measurements are approximate, not to scale.**